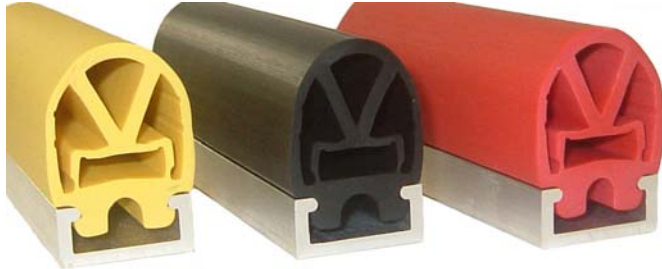


TS26C Sensing Edge



Features

- Custom configurations
- Choice of colours
- Variety of mounting options
- Immediate activation
- Easy installation
- Fail-safe wiring available
- Durable construction
- Sealed switch compartment

TS26C is a compact and durable sensing edge which is ideal for a wide range of safety applications. Responding to both head-on and side impact, TS26C can be supplied in custom configurations to provide increased flexibility. The exterior housing is available in a choice of popular colours and is supplied with either flat or angled aluminium channel to satisfy any mounting arrangement.

Typical Applications

- Side bumpers on AGV's
- Stage lifts
- Lift doors
- Moving doors

Technical Specification

Actuating force (80mm \varnothing test piece)	<140N (14.0kg)
Overtravel movement to 250N	8mm
Actuating distance (80mm \varnothing test piece)	approx. 2mm
Housing material	Santoprene/PVC
Housing colour	Black, red or yellow
Ingress protection	IP65
Operating temperature	-20°C to + 50°C
Typical weight	700g/m
Recommended max voltage	30V d.c.
Switching current @ 30Vdc	1A

Dimensions Scale 1:1

