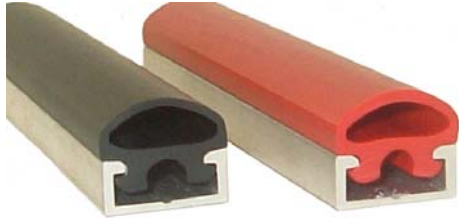


TS6 Sensing Edge



Features

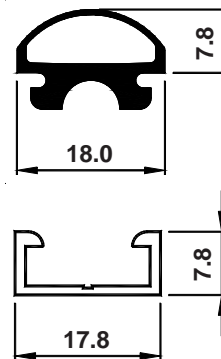
- Custom configurations
- Choice of colours
- Variety of mounting options
- Immediate activation
- Easy installation
- Fail-safe wiring available
- Durable construction
- Sealed switch compartment
- End caps available

TS6 is a low profile, mini edge designed for pinch point applications which require the features of a pressure-sensitive switch but with added cushioning. It snaps easily into a choice of aluminium or plastic mounting channel, and the small profile ensures easy installation where space is restricted. The tough, extruded polymer housing is available in a choice of colours and can be supplied with end caps fitted to provide a dust-proof seal.

Typical Applications

- Personnel lifts
- Sliding doors
- Conveyor systems
- Dumbwaiter doors
- Disabled facilities
- Medical tables

Dimensions Scale 1:1



Technical Specification

Actuating force (80mmØ test piece)	<55N (5.5kg)
Overtravel movement to 250N	1mm
Actuating distance (80mmØ test piece)	approx. 3.5mm
Housing material	Santoprene/PVC
Housing colour	Black or red
Ingress protection	IP65
Operating temperature	-20°C to + 50°C
Typical weight	300g/m
Recommended max voltage	30V d.c.
Switching current @ 30Vdc	1A

GB-02/07

Tapeswitch Ltd

Unit 38 Drumhead Road Chorley North Industrial Park Chorley Lancashire England PR6 7BX
 Tel Int +44 01257 249777 Fax Int +44 01257 246600 E-mail info@tapeswitch.co.uk Website www.tapeswitch.co.uk